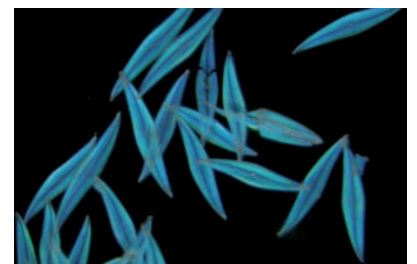
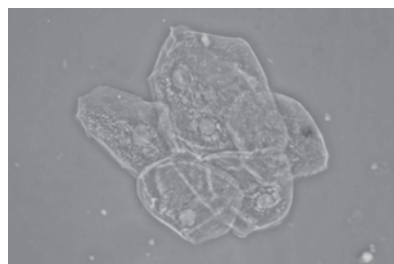
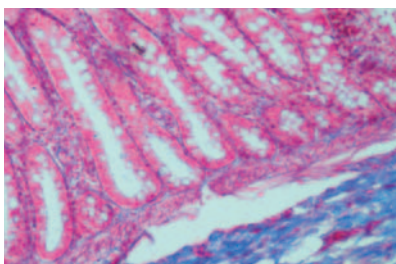
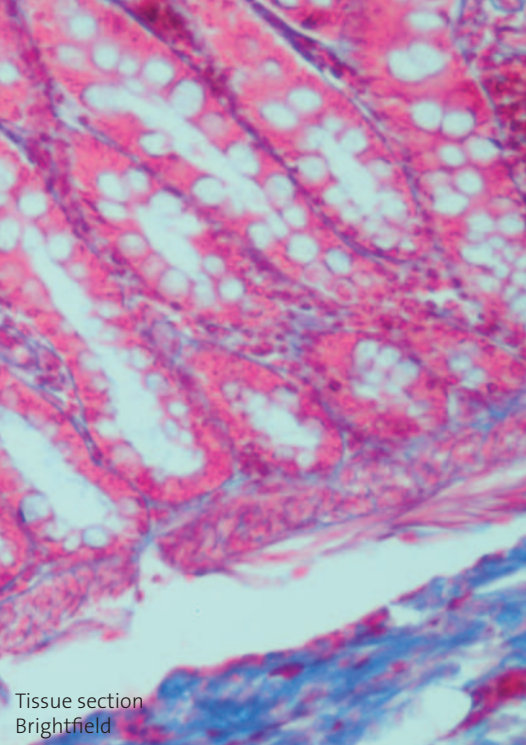


medicus plus

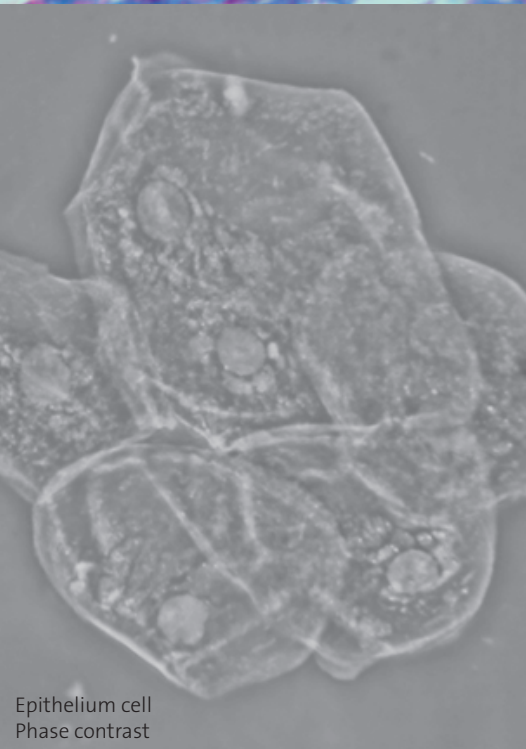
The Microscope for Medical Practices and Biological Laboratories



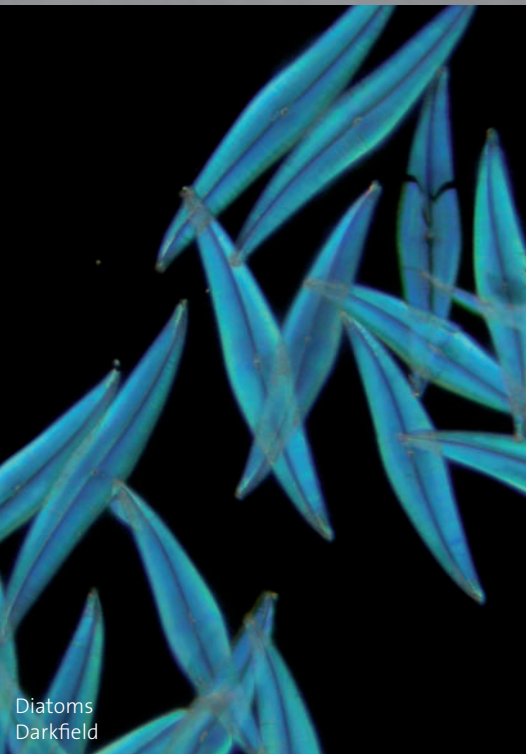
Safe investments:
Reliable microscopic results with expert consultancy



Tissue section
Brightfield



Epithelium cell
Phase contrast



Diatoms
Darkfield

The medicus plus is designed for biological education and medical laboratories. It is very well suited for investigating tissue sections, blood smears, urine sediments or bacteria. The product features and related user benefits are especially aligned to these investigations.

- **Completely flat field of view**
- **Bright and homogeneous 20-W halogen illumination**
- **Ergonomic arrangement of all control elements**
- **Safe Operation**
- **Optimal contrast in brightfield, phase contrast and darkfield**

Optimal Contrast in Brightfield, Phase contrast and Darkfield

Brightfield microscopy: medicus plus

Brightfield observation of high-contrast, mostly stained specimens like tissue sections or smears. With plan-achromatic objectives 4x/0.10, 10x/0.25, 40x/0.65, 100x/1.25 Oil.

Phase-contrast microscopy: medicus plus PH

Optimal image contrast when observing unstained, low-contrast specimens like urine sediments, bacteria or cells. The configuration medicus plus PH with fototube allows comfortable documentation of the microscopic images with C-Mount cameras. With plan-achromatic objectives 4x/0.10, 10x/0.25, Ph 40x/0.65, 100x/1.25 Oil.

Darkfield microscopy

A diaphragm that can be attached to the condenser allows the dark-field observation of low-contrast, stained or unstained specimens at objective magnifications of up to 40x – ideal, e. g., for the detection of spirochaetes or for the investigation of activated sludge.

Configuration

medicus plus:

For brightfield with binocular tube and planachromatic objectives 4x, 10x, 40x, 100x oil

medicus plus photo:

As medicus plus, with photo tube.

medicus PH:

For phase contrast and brightfield, with binocular tube. Planachromatic objectives 10x, PH 40x, 100x oil.

medicus plus PH photo:

As medicus plus PH with photo tube.

The Microscope for Routine Tasks

Optimal image (1+2)

- Completely flat field of view due to plan-achromatic, infinity-corrected objectives
- Eyepieces WF 10x/20 with large field numbers
- Homogeneous illumination with condenser NA 1.25 with aperture diaphragm
- High illumination intensity due to 20-W halogen lamp

Comfortable microscopic work (3)

- Ergonomically arranged focusing and stage control knobs
- Hand rests for ergonomic operation
- Siedentopf-type observation tube with pupillary distance adjustment
- Diopter corrections on both eyepiece tubes

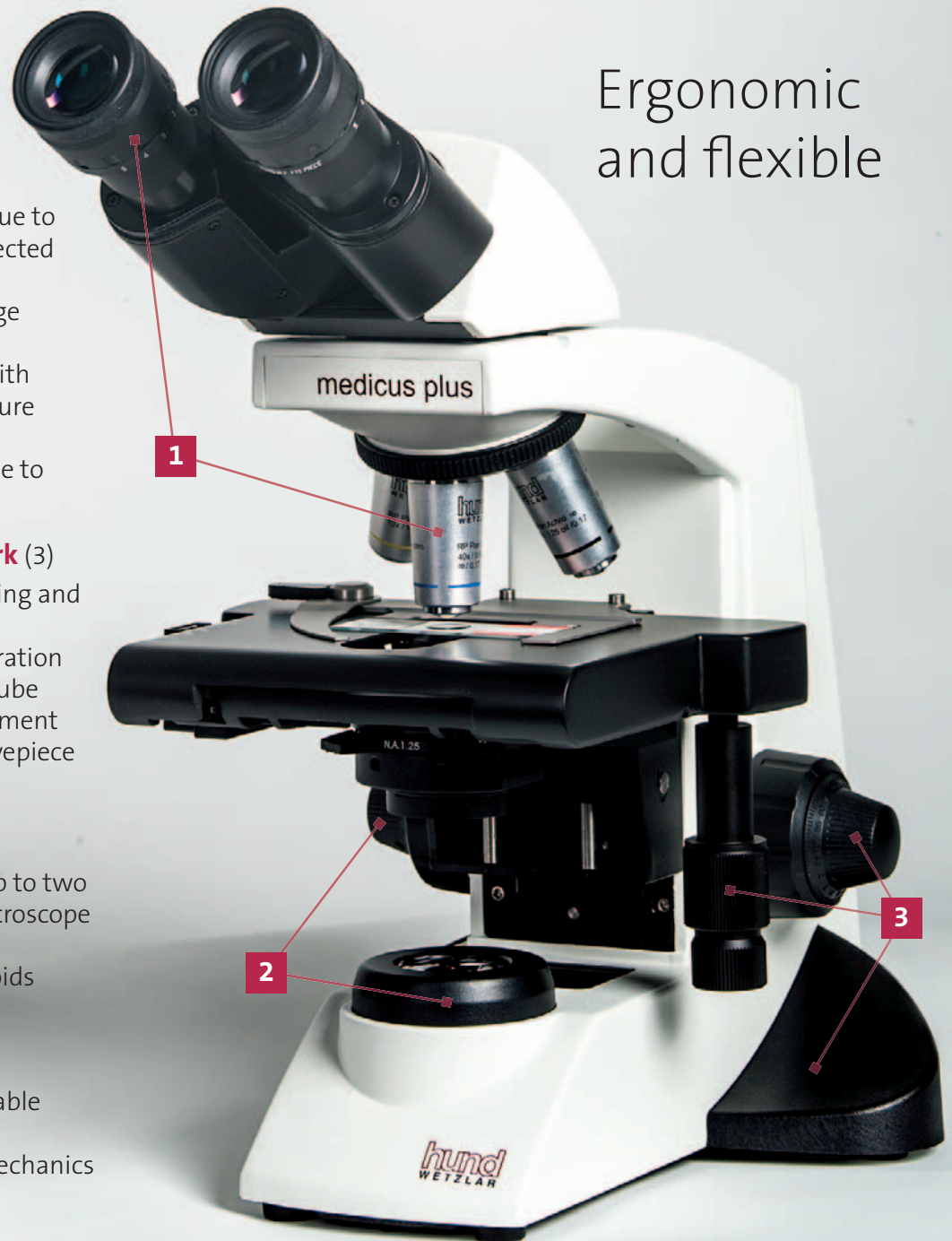
Safe operation

- Comfortable observation of up to two specimens thanks to large microscope stage
- Rackless microscope stage avoids injuries

Long durability

- Stable cast-metal stand for stable microscopic work
- Long lifetime due to robust mechanics

Ergonomic and flexible



Safe working with rackless stage.



Ergonomic arrangement of all drive knobs allows comfortable microscopic work.



Simple adaptation of C-Mount cameras with 1/2" sensors via dedicated adapters.



Precise optics, robust mechanics

One microscope for every application

- Examinations of blood, tissue sections and smears in brightfield
- Examinations of urine sediments, bacteria and cell cultures in phase contrast and/or 40x darkfield

Ergonomy

Comfortable microscopic work due to

- adjustable Siedentopf-type observation tube with optimal viewing angle,
- ergonomically arranged control elements for focusing and stage movement

Sharp images all over the field of view

- Plan-achromatic brightfield objectives 4x/10x/40x/100x
- Plan-achromatic phase-contrast objective 40x

Documentation made easy

- Trinocular tube for direct camera attachment
- Adapter for C-Mount cameras with 1/2" sensors

Technical data

Stand	Solid cast-metal stand
Focusing drive	Coaxial coarse and fine focusing drives Max. travel of coarse focusing drive: 12.7 mm Resolution fine focusing drive: 3 µm per scale division
Observation tube	Binocular, Siedentopf type Viewing angle 30° Tube factor 1x Interpupillary distance 55 mm – 75 mm Diopter correction on both eyepiece tubes
Nosepiece	Quadruple
Objectives	Plan-achromatic, infinity-corrected: Plan 4x/0.10 Plan 10x/0.25 Plan 40x/0.65, spring-loaded Plan 100x/1.25 Oil, spring-loaded Plan Phase 40x/0.65, spring-loaded
Microscope stage	Size 200 mm x 160 mm, travel range: 78 mm x 54 mm Specimen holder for up to two slides, rackless drive
Condenser	Abbe type, NA 1.25, with aperture diaphragm and attachable filters height-adjustable
Illumination	Halogen lamp 6 V / 20 W
Mains voltage	110 V – 240 V
Accessories	Condenser diaphragm, attachable Photo Tube 30/70 Centering telescope for phase contrast Videoadapter (C-Mount 0,5)

Technical specifications may be changes without notice.

Helmut Hund GmbH
Verkauf Mikroskopie
Wilhelm-Will-Str. 7
D-35580 Wetzlar, Germany
Tel. +49 (0) 6441 2004-0
Fax +49 (0) 6441 2004-44
info@hund.de
www.hund.de

hund
WETZLAR